

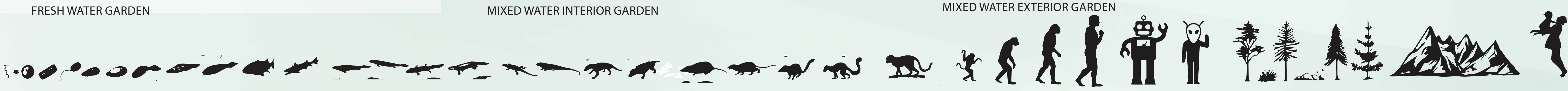
MARSH-HAP

THE SPACES IN BETWEEN

Where the marsh meets the people !

The proposal takes place at the edge, where city center meets the outer neighbourhood, the industrial area and the port. The aim is the revitalization of the social and natural landscapes of this area of Le Havre, by the reinforcement of the link between Le Havre's people and their marshy landscape. Marsh-Hap acts as an element of connection both mentally and physically, it will bring together the city center and the back neighbourhood and be the connective point in the center of the future green route that will go from the beach to the Stadium.

The filtration of sea water from the basin will create new common spaces of diverse autochthonous vegetation which will stitch together the Marsh-Hap with the outer park generating a new green gate of entrance to Le Havre.

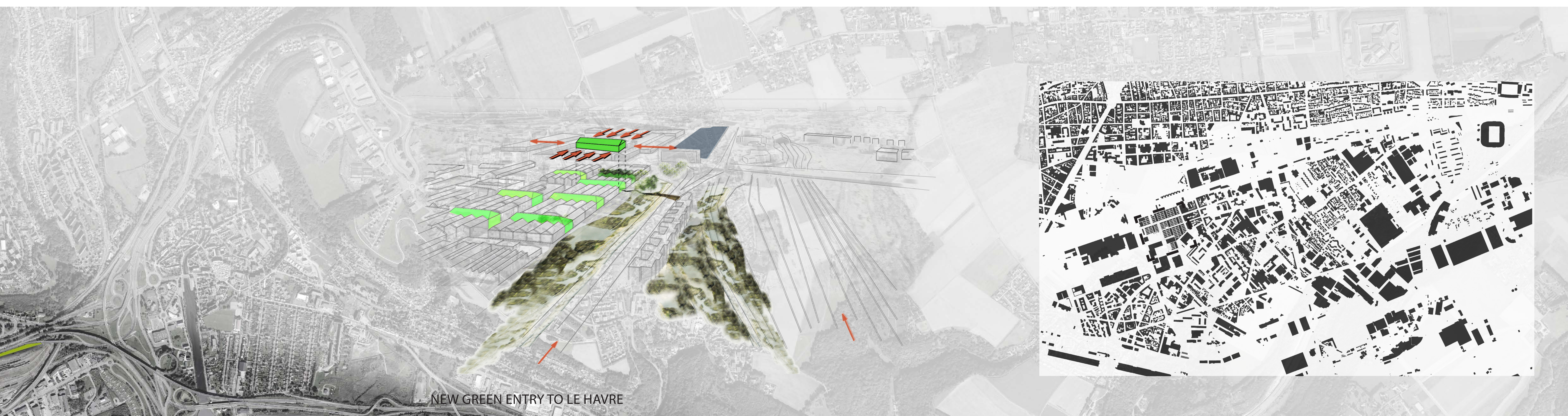




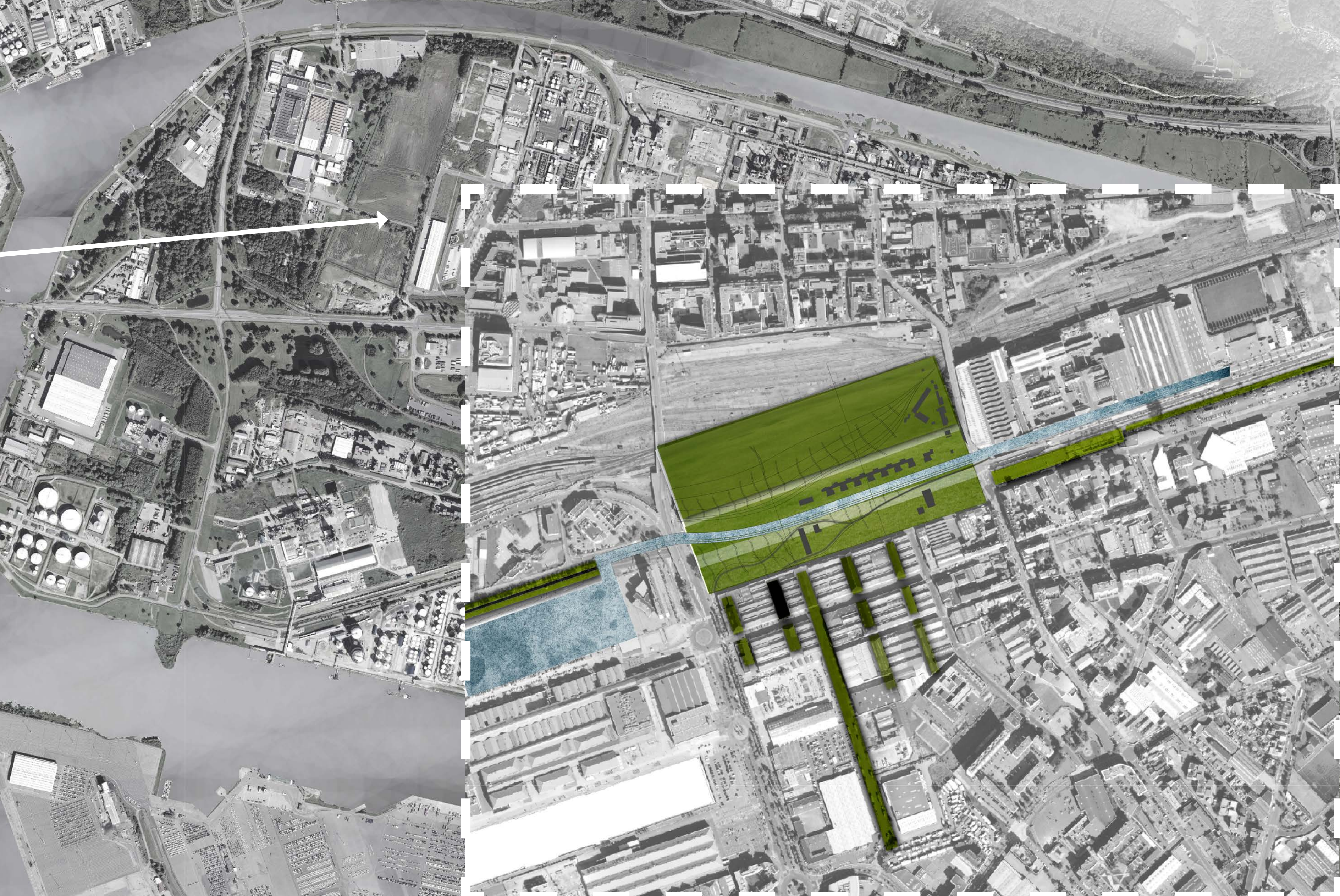
ACTIVE COMMON SPACES



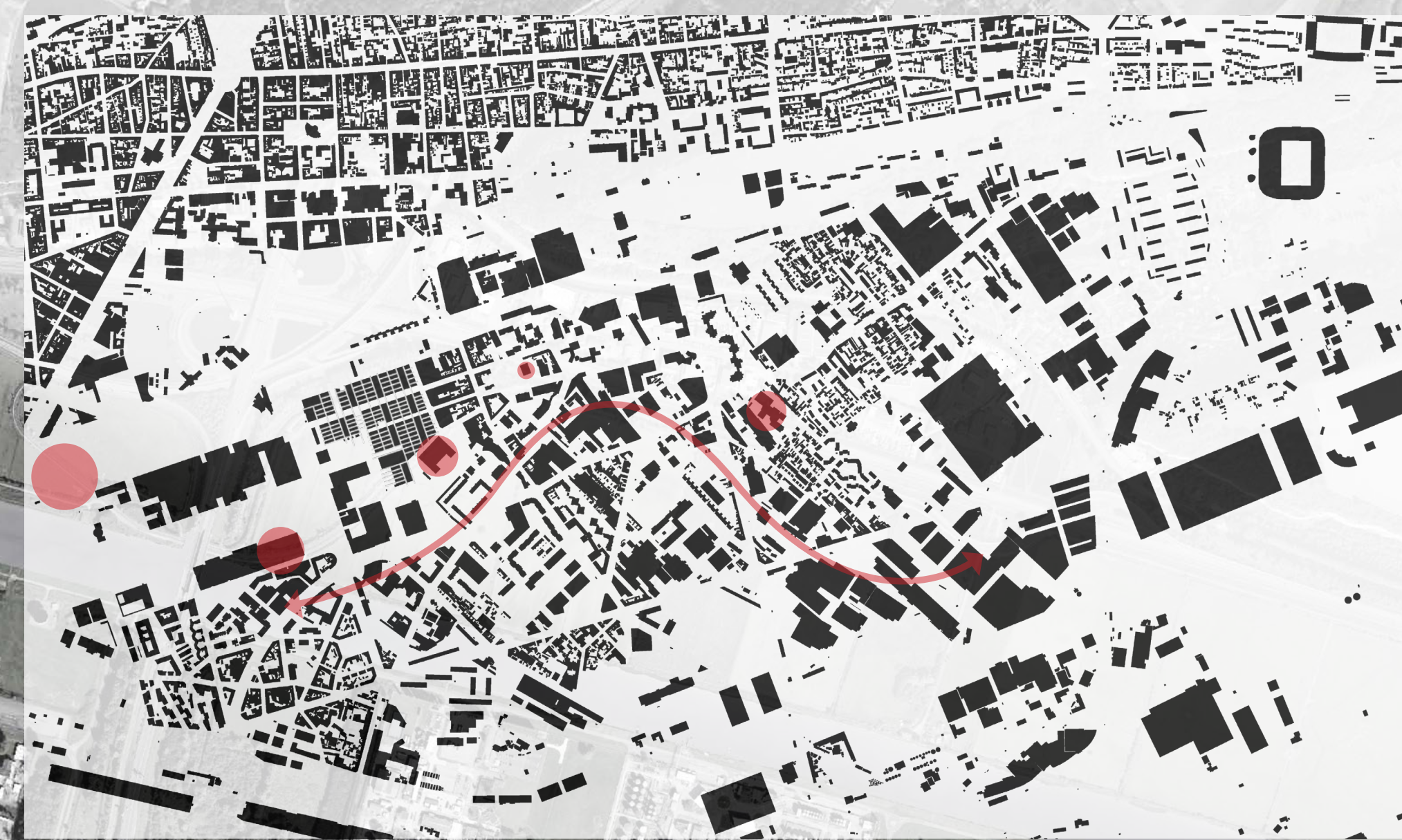
ENTRY IN NEW GREEN NEIGHBOURHOOD



NEW GREEN ENTRY TO LE HAVRE



MARSH MAP 1:2000



EDUCATIONAL CONNECTION



BLUE AND GREEN CONNECTION



SEINE ESTUARY

LE PONT DE NORMANDIE